



# El Ventall d'Ordino

Andorra Residential





# General description



**82,00 m<sup>2</sup> - 125,00 m<sup>2</sup>**  
built interiors



**11 Homes**  
**2-3 Bedrooms**



**Terrace or garden**  
Wellnes & spa



# The area

The small mountain village of Ordino, the capital of the parish of the same name, is located in the northeast of the Principality of Andorra.

It's known for its deep-rooted alpine traditions, picturesque buildings, and narrow streets, which weave together the modernity of a contemporary town with the traditionalism of its genuine facades and sights.

The village of Ordino sits along the Valira del Norte River, just a few minutes from the capital of the Principality of Andorra and the country's main commercial and economic hubs. However, the town is known for its vibrant cultural and entertainment scene, as Ordino is the main meeting point for skiing at one of the most alpine resorts in the Pyrenees: Ordino-Arcalís.

Ordino is at an elevation of 1,300 meters and faces south across the Valira River valley, with a magnificent panoramic vista of Andorra's geography and the nearby mountains, as well as fantastic light that provides unbeatable views.



# The place

The Turera de Ordino development is north of the town center on the same road that winds up the valley to some of Andorra's most alpine peaks.

This small development is 1 kilometer from the center of Ordino, which can be reached by road or on a pleasant stroll surrounded by the local nature. This exclusive location brings together all the best of living in a quiet area surrounded by nature with convenient, fast, and efficient connections to the country's main hubs.





El ventall d'Ordino



Auditori Nacional Andorra

12 min  3 min 

Village Ordino

10 min  3 min 

La Massana  
Andorra la Vella

8 min   
12 min 

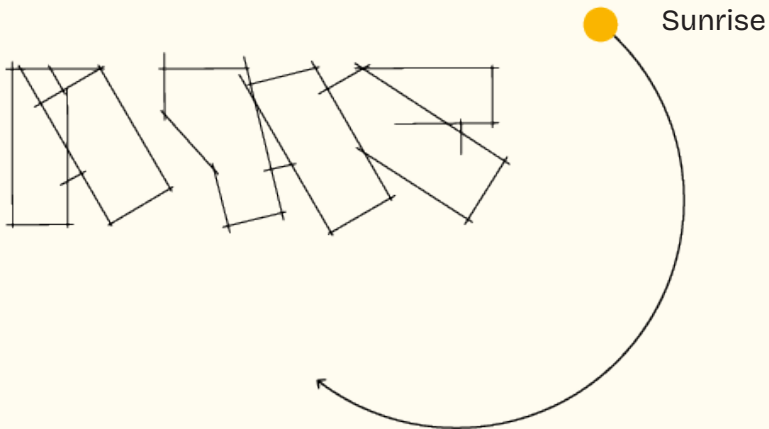


# El Ventall

The Ventall d'Ordino project aims to provide each and every home with all the privileges of its location. The building is designed to pay tribute to the exclusivity of the place and the area, with a fan shape that embraces the light and the views of a valley bathed in both.

The building starts from a very compact base and opens towards the southwest edge of the plot, providing excellent views over the valley and the best orientation and lighting.

This compacted base then defragments as the building rises, so that every home enjoys the same privileges. Vertical openings allow light to enter into different areas and the interplay of transparencies and opaque elements gives each home its privacy. The result is an airy building with an interior layout that meets the requirements of each home.





# Transparency, views, and privacy

## Natural light

A form of energy that illuminates things, makes them visible, and gives them color and feeling. It shows us a more pleasant version of reality and brings us happiness.

## South-facing balconies

The spaciousness to feel free, fill the lungs with fresh air, and release any binds or tightness from the daily grind.

## Panoramic view

The benefit of enjoying the best panoramic view with the privacy of an exclusive and intimate spot.

On these balconies, natural light interplays with the views to create natural canvases with the best works of art ever created: the world and nature at your feet.









# Inhabit

Human beings generate roots by how we inhabit spaces. Home is the place where we feel free and where we can be ourselves.

It is the most authentic and noble place we occupy throughout the day and where we can show our true colors, with no reservations or restrictions. That's why there's no architecture more important than that which glorifies the place where human beings return to their

essence. The pleasant materials, the fluid spaces, and the delicate balance between panorama and privacy make the home a dignified space for humans, where they can move freely between the indoors and the out.

# Function

Over time, family customs have gradually transformed from everyday lives in which each space has its own use to a life where spaces open and relate to each other, sparking interactions between different daily uses, customs, and tasks.

The kitchen is a clear example of this shift in customs and relationships between spaces and uses, transforming from a generally closed-off separate room into a fully open space directly connected to the prime areas of the home.

Despite this, the kitchen's character as a space of work and preparation makes the materials used and the flexibility of opening or closing into the prime areas an essential requirement.







# Serve

Every home should be equipped with the best services at our disposal. The prime spaces where we live and enjoy are just as important as the spaces where we do our daily tasks.

These connect to the day and nighttime spaces of the home in a direct, spacious, and comfortable arrangement, while preserving the privacy required for this type of use. The materials selected and the fluidity of the spaces create a service area that is both stately and functional.

# Shelter

The prime areas of the home create diaphanous open spaces, where crossing sightlines and fluid traffic patterns between spaces generate comfort and convenience.

This, combined with materials that honor the architecture, creates an exclusive home. All homes must include that space where we feel protected from all outside or external elements.

It's where we sleep and where we seek shelter from the light, the noise, and the exterior.

The grandeur of these spaces allows for flexibility between night and day, offering visuals and spaces to enjoy the surroundings by day while keeping us protected at night.





# Wellness & Spa



Within the common spaces, the home includes a heated spa area to fully enjoy the benefits of living in nature. The spa is a place to relax and disconnect, a retreat where time moves slowly so you can enjoy every second.



**Home**



# Ground floor

## Block A

**VESTIBULE**  
6,46 m<sup>2</sup>

**LIVING ROOM**  
21 m<sup>2</sup>

**KITCHEN**  
12 m<sup>2</sup>

**BEDROOM 1 WITH BATHROOM  
AND WALK-IN CLOSET**  
22,60 m<sup>2</sup>

**BEDROOM 2**  
18,90 m<sup>2</sup>

**BATHROOM 2**  
4,40 m<sup>2</sup>



**100 m<sup>2</sup>**  
built



**48 m<sup>2</sup>**  
terrace-garden



# Ground floor Block B

**VESTIBULE**  
4,45 m<sup>2</sup>

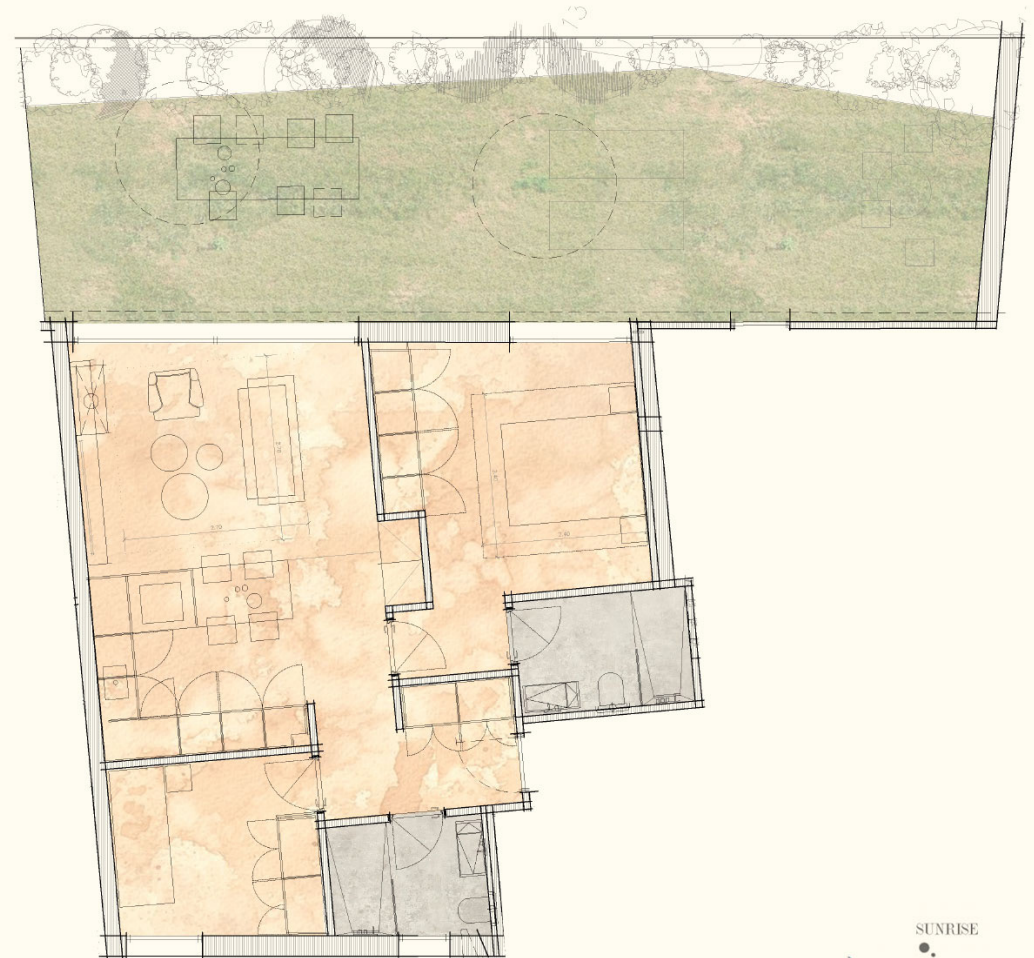
**BEDROOM 1 WITH BATHROOM  
AND WALK-IN CLOSET**  
20,60 m<sup>2</sup>

**LIVING ROOM**  
14 m<sup>2</sup>

**BEDROOM 2**  
7,80 m<sup>2</sup>

**KITCHEN**  
12 m<sup>2</sup>

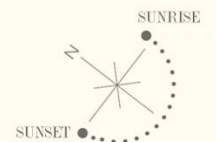
**BATHROOM 2**  
14 m<sup>2</sup>



**71,60 m<sup>2</sup>**  
built



**58 m<sup>2</sup>**  
terrace-garden





# Second floor Block A

**VESTIBULE**  
4,11 m<sup>2</sup>

**BEDROOM 1 WITH BATHROOM  
AND WALK-IN CLOSET**  
20 m<sup>2</sup>

**LIVING ROOM**  
23,28 m<sup>2</sup>

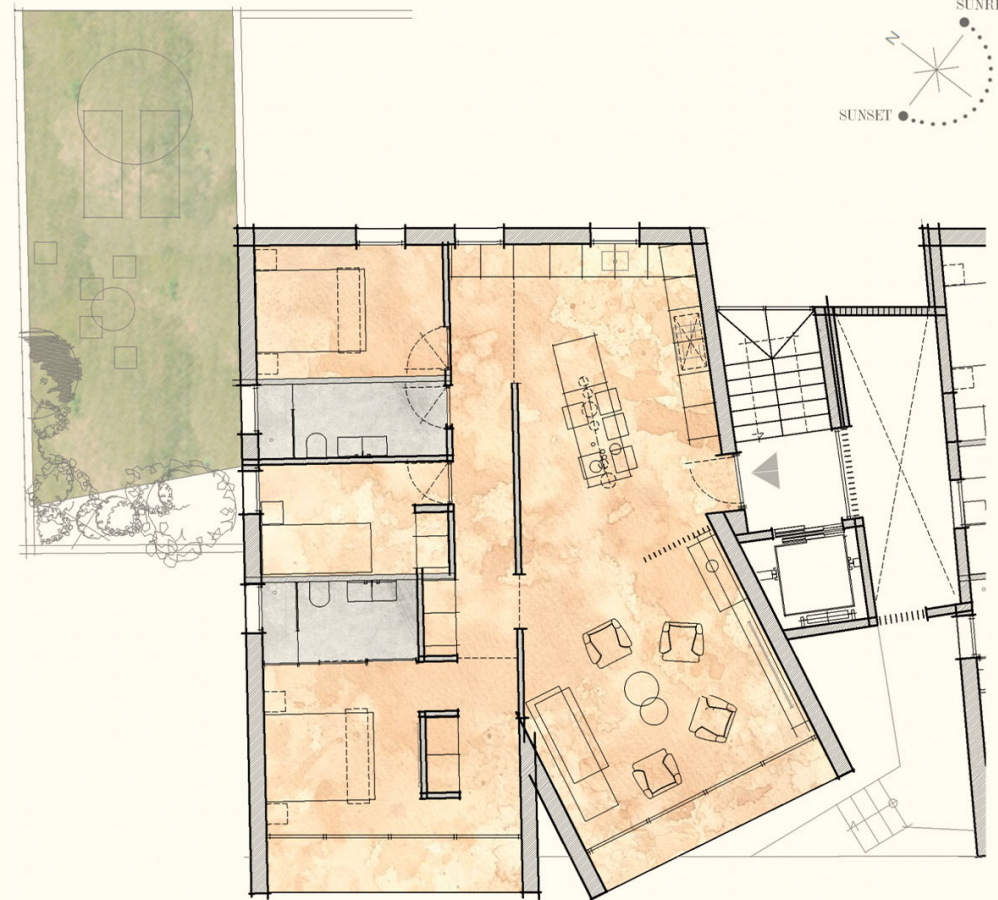
**BEDROOM 2**  
6,90 m<sup>2</sup>

**KITCHEN**  
18,30 m<sup>2</sup>

**BEDROOM 3**  
9 m<sup>2</sup>

**VESTIBULE 2**  
4,22 m<sup>2</sup>

**BATHROOM 2**  
4,81 m<sup>2</sup>



**110,06 m<sup>2</sup>**  
built



**40,49 m<sup>2</sup>**  
terrace-garden



**3,50 m<sup>2</sup>**  
terrace living room



**5 m<sup>2</sup>**  
repissa + terrace bedroom



# Second floor Block B

**VESTIBULE**  
3 m<sup>2</sup>

**BEDROOM 1 WITH BATHROOM  
AND WALK-IN CLOSET**  
22 m<sup>2</sup>

**LIVING ROOM**  
17,70 m<sup>2</sup>

**BEDROOM 2**  
7,52 m<sup>2</sup>

**KITCHEN**  
16,50 m<sup>2</sup>

**BEDROOM 3**  
10,36 m<sup>2</sup>

**VESTIBULE 2**  
4,75 m<sup>2</sup>

**BATHROOM 2**  
3,70 m<sup>2</sup>



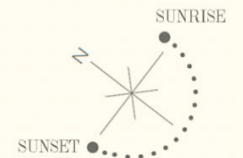
**100,10 m<sup>2</sup>**  
built



**3 m<sup>2</sup>**  
terrace living room



**3,20 m<sup>2</sup>**  
terrace bedroom





# Second floor Block C

**VESTIBULE**  
2,90 m<sup>2</sup>

**BEDROOM 1 WITH BATHROOM  
AND WALK-IN CLOSET**  
13,60 m<sup>2</sup>

**LIVING ROOM**  
22,75 m<sup>2</sup>

**BEDROOM 2**  
9,50 m<sup>2</sup>

**KITCHEN**  
11,20 m<sup>2</sup>

**BATHROOM 2**  
4,10 m<sup>2</sup>

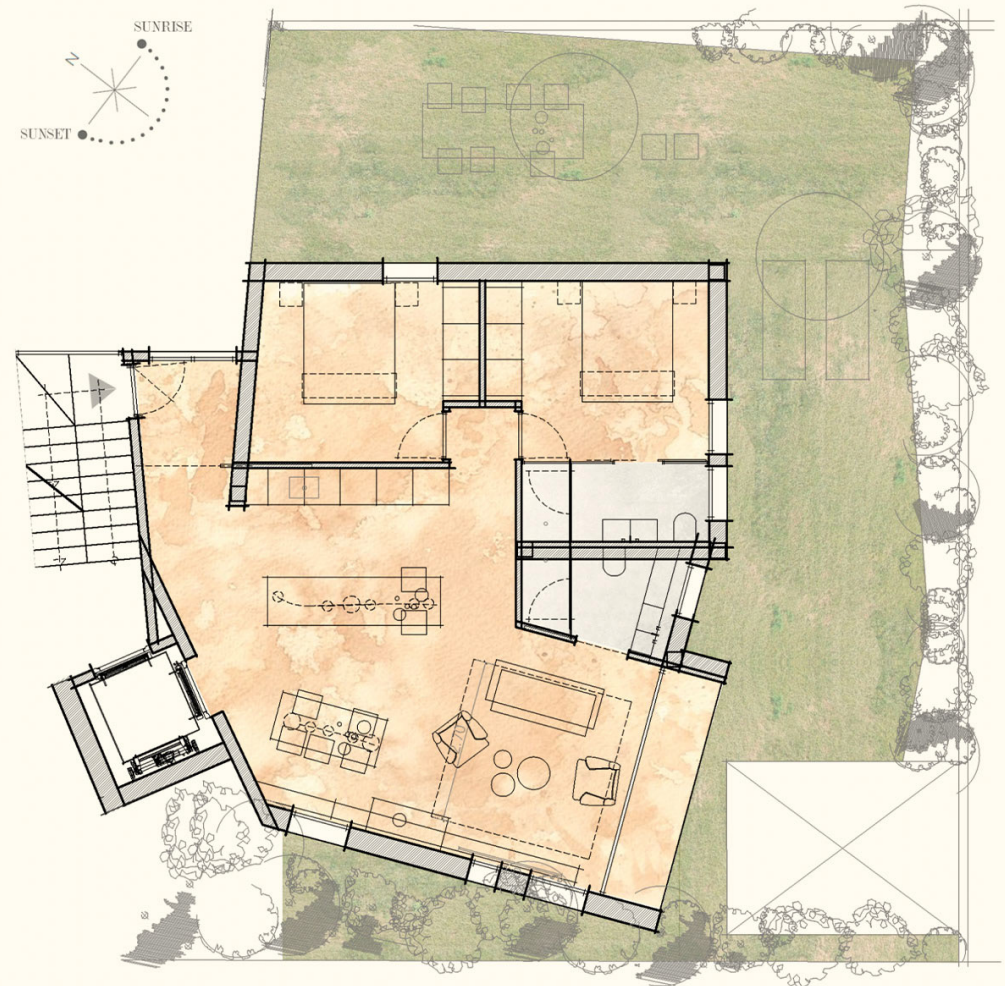
**VESTIBULE 2**  
4,45 m<sup>2</sup>



**81,80 m<sup>2</sup>**  
built



**82 m<sup>2</sup>**  
terrace-garden



# Third floor Block A

**VESTIBULE**  
4,11 m<sup>2</sup>

**BEDROOM 1 WITH BATHROOM  
AND WALK-IN CLOSET**  
20 m<sup>2</sup>

**LIVING ROOM**  
23,28 m<sup>2</sup>

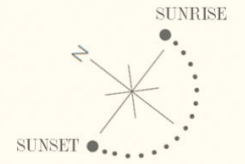
**BEDROOM 2**  
6,90 m<sup>2</sup>

**KITCHEN**  
18,30 m<sup>2</sup>

**BEDROOM 3**  
9 m<sup>2</sup>

**VESTIBULE 2**  
4,22 m<sup>2</sup>

**BATHROOM 2**  
4,8 m<sup>2</sup>



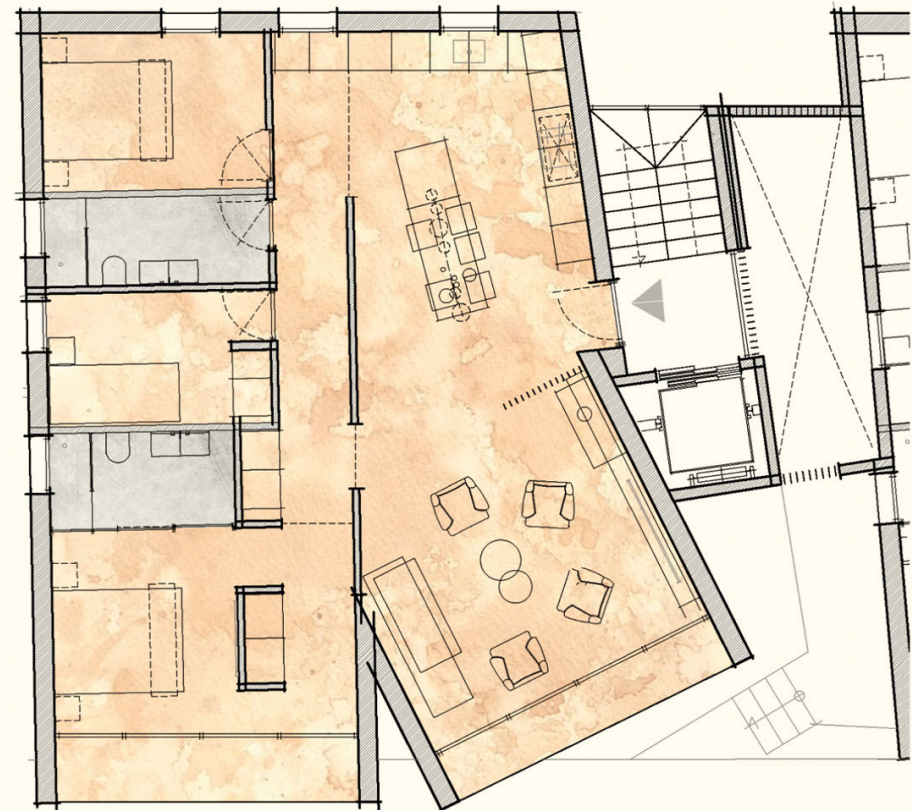
**110,06 m<sup>2</sup>**  
built



**3,50 m<sup>2</sup>**  
terrace living room



**5 m<sup>2</sup>**  
terrace bedroom





# Third floor Block B

**VESTIBULE**  
3 m<sup>2</sup>

**BEDROOM 1 WITH BATHROOM  
AND WALK-IN CLOSET**  
22 m<sup>2</sup>

**LIVING ROOM**  
17,70 m<sup>2</sup>

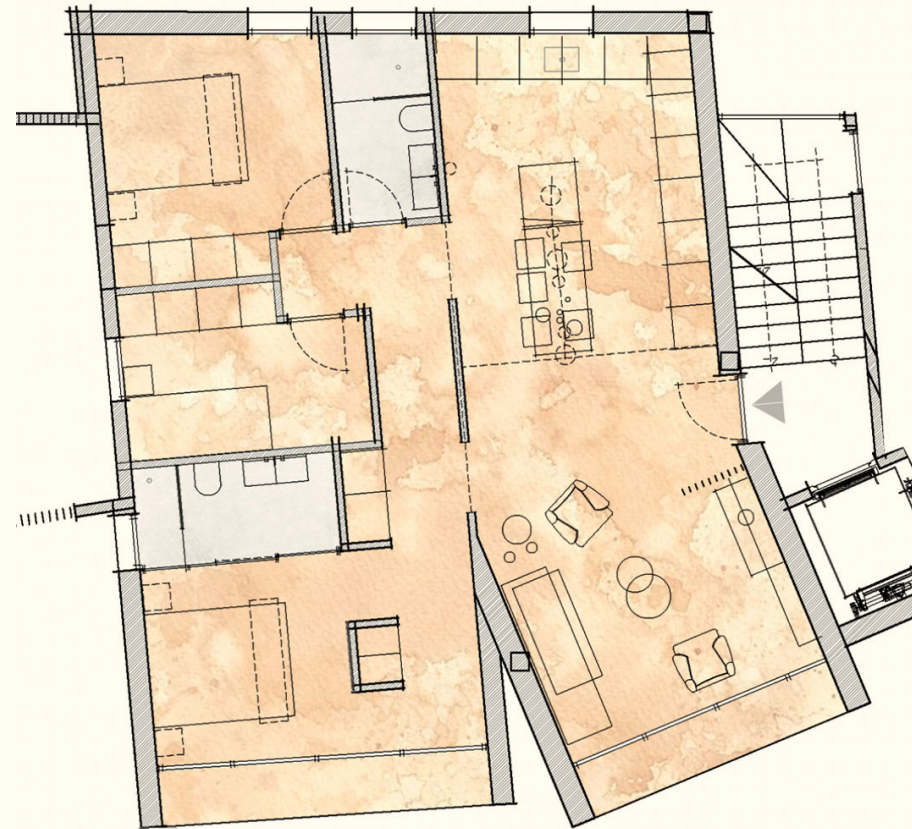
**BEDROOM 2**  
7,52 m<sup>2</sup>

**KITCHEN**  
16,50 m<sup>2</sup>

**BEDROOM 3**  
10,36 m<sup>2</sup>

**VESTIBULE 2**  
4,75 m<sup>2</sup>

**BATHROOM 2**  
3,70 m<sup>2</sup>



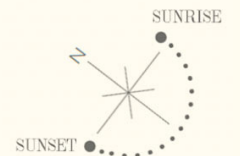
**100,10 m<sup>2</sup>**  
built



**3 m<sup>2</sup>**  
terrace living room



**3,20 m<sup>2</sup>**  
terrace bedroom



# Third floor Block C

**VESTIBULE**  
4,45 m<sup>2</sup>

**BEDROOM 1 WITH BATHROOM  
AND WALK-IN CLOSET**  
13,60 m<sup>2</sup>

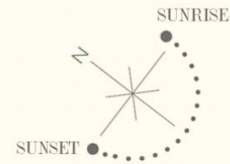
**LIVING ROOM**  
22,75 m<sup>2</sup>

**BEDROOM 2**  
9,50 m<sup>2</sup>

**KITCHEN**  
13,40 m<sup>2</sup>

**BATHROOM 2**  
4,10 m<sup>2</sup>

**VESTIBULE 2**  
2,15 m<sup>2</sup>



**84,20 m<sup>2</sup>**  
built



**3,50 m<sup>2</sup>**  
terrace bedroom



# Attic floor

## Block A

**VESTIBULE**  
7,20 m<sup>2</sup>

**BEDROOM 1 WITH BATHROOM  
AND WALK-IN CLOSET**  
20 m<sup>2</sup>

**LIVING ROOM**  
2,28 m<sup>2</sup>

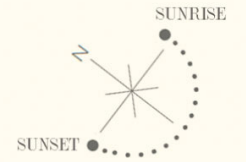
**BEDROOM 2**  
6,90 m<sup>2</sup>

**KITCHEN**  
18,30 m<sup>2</sup>

**BEDROOM 3**  
9 m<sup>2</sup>

**VESTIBULE 2**  
4,22 m<sup>2</sup>

**BATHROOM 2**  
4,81 m<sup>2</sup>



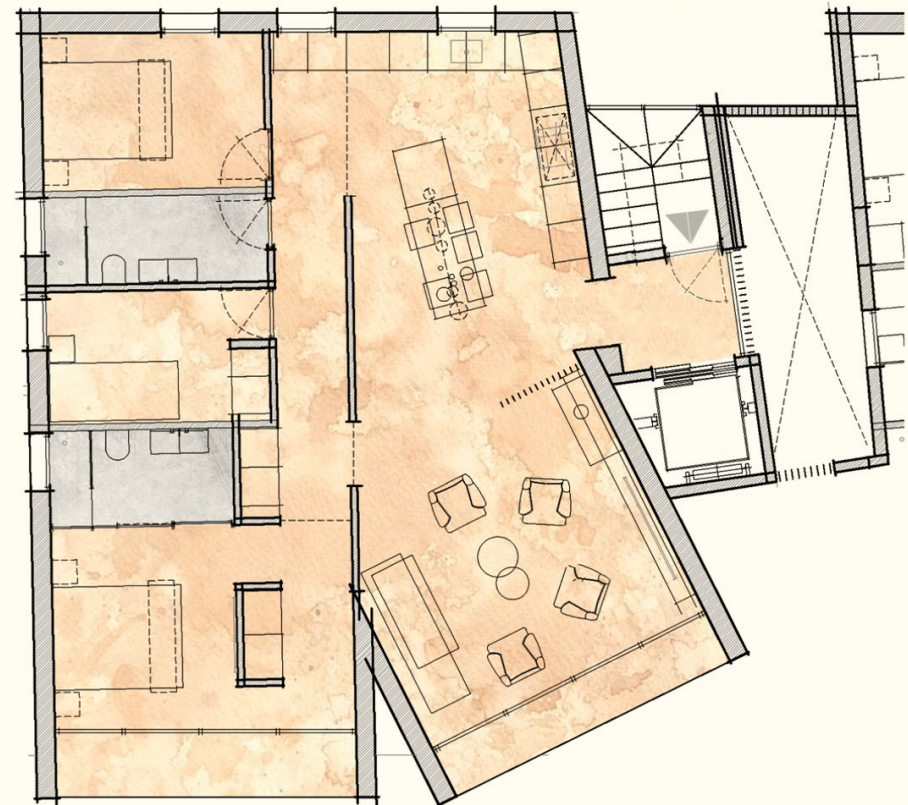
**115,31 m<sup>2</sup>**  
built



**3,50 m<sup>2</sup>**  
terrace living room



**5 m<sup>2</sup>**  
terrace bedroom



# Attic floor Block B

**VESTIBULE**  
5,75 m<sup>2</sup>

**BEDROOM 1 WITH BATHROOM  
AND WALK-IN CLOSET**  
22 m<sup>2</sup>

**LIVING ROOM**  
17,70 m<sup>2</sup>

**BEDROOM 2**  
7,52 m<sup>2</sup>

**KITCHEN**  
16,50 m<sup>2</sup>

**BEDROOM 3**  
10,36 m<sup>2</sup>

**VESTIBULE 2**  
4,75 m<sup>2</sup>

**BATHROOM 2**  
3,70 m<sup>2</sup>



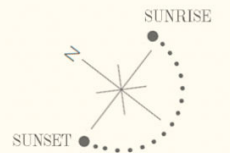
**105 m<sup>2</sup>**  
built



**3 m<sup>2</sup>**  
terrace living room



**3,20 m<sup>2</sup>**  
terrace bedroom





# Attic floor

## Block C

**VESTIBULE**  
4,45 m<sup>2</sup>

**BEDROOM 1 WITH BATHROOM  
AND WALK-IN CLOSET**  
13,60 m<sup>2</sup>

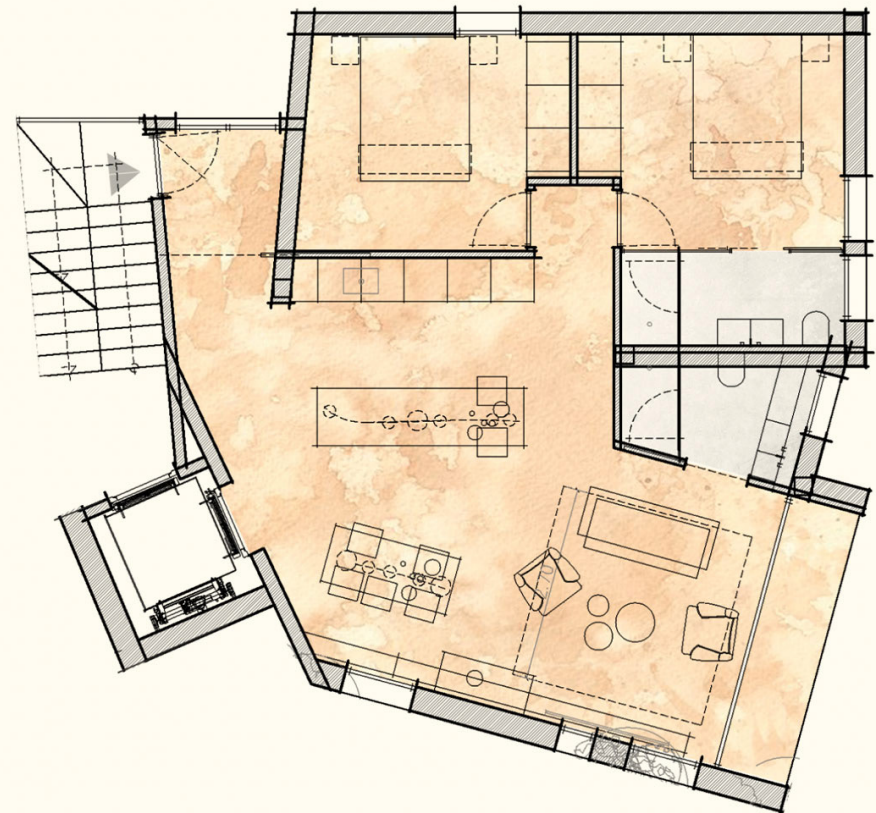
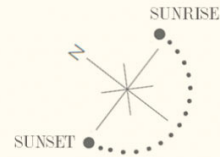
**LIVING ROOM**  
22,75 m<sup>2</sup>

**BEDROOM 2**  
9,50 m<sup>2</sup>

**KITCHEN**  
13,40 m<sup>2</sup>

**BATHROOM 2**  
4,10 m<sup>2</sup>

**VESTIBULE 2**  
2,15 m<sup>2</sup>



**84,20 m<sup>2</sup>**  
built



**3,50 m<sup>2</sup>**  
terrace living room

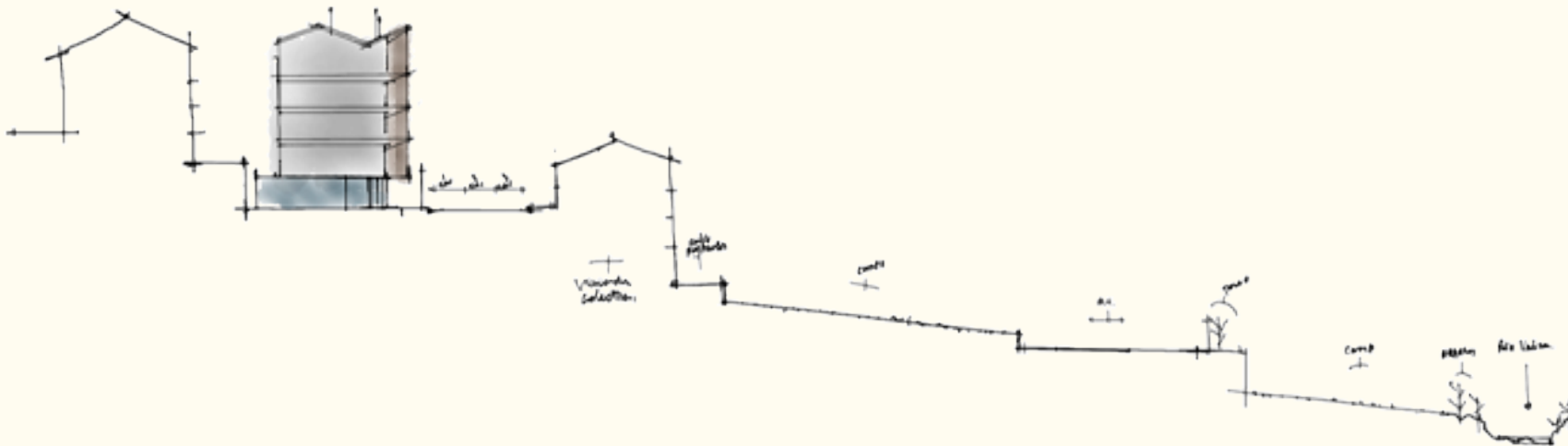
# Minimalist & architecture project designed by Architecture MR.

Architecture MR is a team dedicated to the creation of unique architecture projects and to the integral development of construction projects.

We are focused on offering a broad and distinctive architecture and construction service, accompanying our clients through all the development phases of a project, always with the maximum creative and technical rigor.

Through the analysis of the specific needs of each client and our passion and demand for the quality of each detail, our creation department develops architecture and interior design projects focused on achieving a differential and unique point of view. Our technical department is responsible for studying and integrally managing the project.

Our approach to projects places particular attention on the quality of the finished work, which we understand as rigorous and thorough monitoring of the entire construction process from design down to the last detail of execution. Our passion for quality architecture defines us as a team, and we use our technical skills to share it with society.





# Thank you!



\*The property reserves the right to modify the final project for technical reasons.